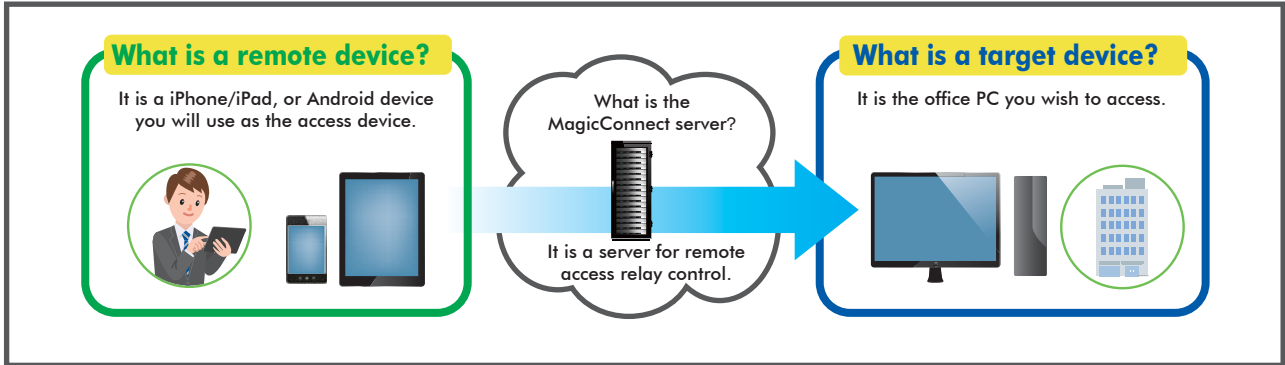





# Getting Started

MagicConnect is a remote access service that allows you safe remote access to a target device from your remote device.



## Steps for using MagicConnect

<h3>1 Items you need</h3> <p>Be sure that you have received the items listed to the right from your Account Manager.*</p> <p>*The person in your company in charge of managing MagicConnect accounts, USB keys, etc.</p>	Necessary items	Details
	<p><b>Your MagicConnect account information</b></p>	<p>Includes three pieces of information:  <input type="checkbox"/> Server information   <input type="checkbox"/> Account (username)   <input type="checkbox"/> Password</p>
	<p><b>The setup program (for your target device)</b></p>	<p>The following program:  <input type="checkbox"/> mcclient20_setup(2).exe</p> 
	<p><b>User Administration Function Manual (For General Users)</b></p>	<p>Use this guide to change passwords, check connection histories, etc.</p>
		
<h3>2 Target PC setup</h3>	p.2	
		
<h3>3 Remote device setup/operation</h3>	<p>[iOS] ..... p.7</p> <p>[Android] ..... p.11</p>	

**Need help?**  
In the event that an error or similar trouble occurs during setup, please contact the Account Manager at your company.

# Target PC setup

Commentary in this Quick Setup Manual is based on the Windows 7 Ultimate Edition operating system.

Setup procedures require administrator privileges.

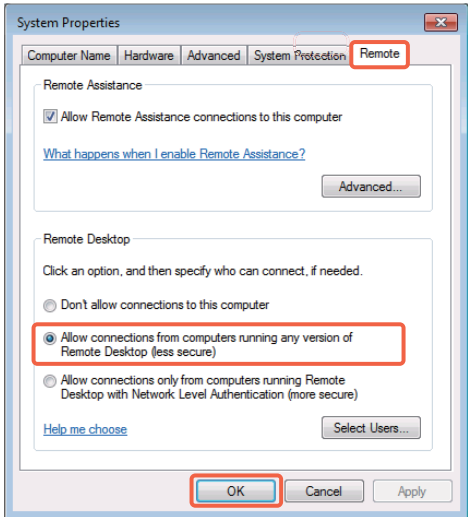
Setup Contents	
1. Enabling Remote Desktop connections	p.2
2. Power options	p.3
3. Installing the MagicConnect client(2) software	p.4
4. Initial setup and connection for the MagicConnect client(2) software	p.5
5. Setup for standby mode	p.6

## 1. Enabling Remote Desktop connections

**Step 1** Open System Properties from the **Start Menu**, go to **Control Panel, System and Security, System: Allow remote access.**

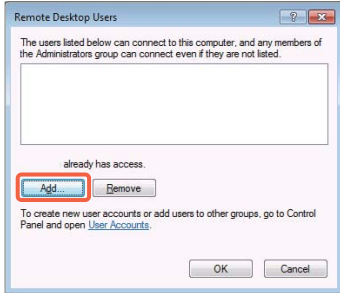
**Step 2** Select the **Remote** tab, check **Allow connections from computers running any version of Remote Desktop**, and click **OK**.

**Caution** Be sure to setup a Windows password for remote users that will log on to the Target PC.

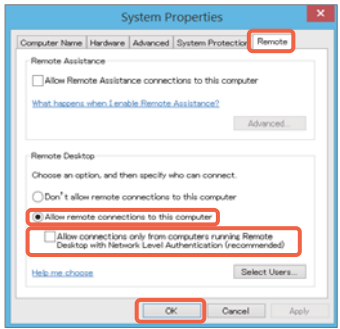


**Pointer**

[For users without administrator privileges]  
 From the **Remote** tab, click the **Select Users** button to display the Remote Desktop Users screen (shown to the right). Click **Add** and register the remote user.



[For Windows 8/8.1]  
 1 Move the mouse to the lower left corner of the desktop and right click (if you are using touch-screen, press and hold ). Select Control Panel from the menu that appears.  
 2 Open System Properties from **System and Security, System: Allow remote access.**  
 3 Check **Allow remote connections to this computer** from the **Remote** tab.  
 4 Uncheck **Allow connections only from computers running Remote Desktop with Network Level Authentication (recommended)**, and click **OK**.

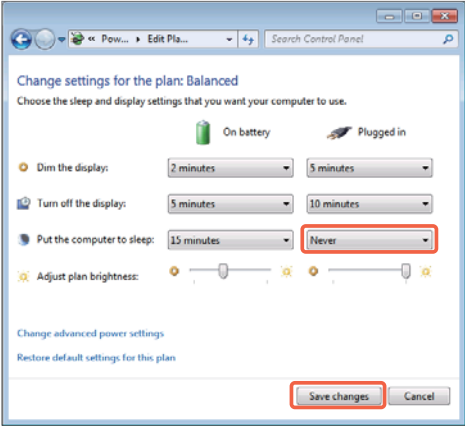


## 2. Power options

**Step 1** From the **Start Menu**, go to **Control Panel, System and Security, Power Options**, and open **Change when the computer sleeps**.

**Step 2** Select **Never** from the **Plugged in** column for **Put the computer to sleep**. Click **Save changes**. The Target PC must be a PC that is always connected to a power source.

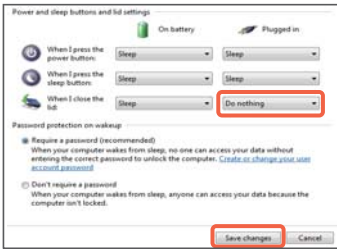
**Caution** When the Target PC is in sleep mode, users of MagicConnect will be unable to connect from outside the office.



**Pointer**

[When the Target PC is a laptop computer]

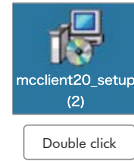
To keep the laptop from going to sleep when the cover is closed, complete the steps up to **Step 2** above, then select **Do nothing** from the **Plugged in** column for **When I close the lid**. Click **Save changes**.



### 3. Installing the MagicConnect client(2) software

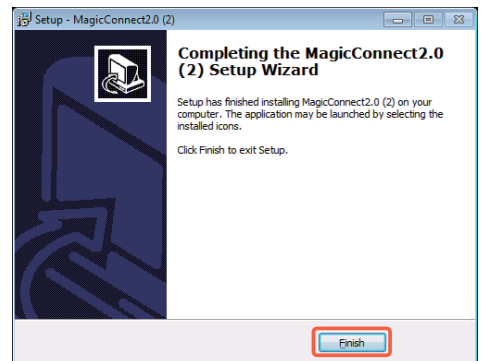
**Step 1** Copy the setup program **mcclient20\_setup(2).exe** (shown to the right) to the Target PC, then double click on it.

\* This can be used even if you have already installed MagicConnect client software from one of our setup packages other than the "**Mobile type**" package.



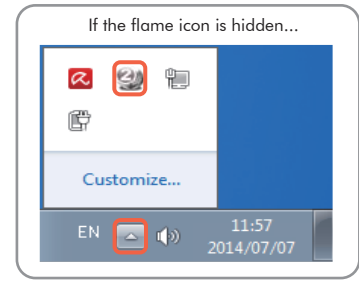
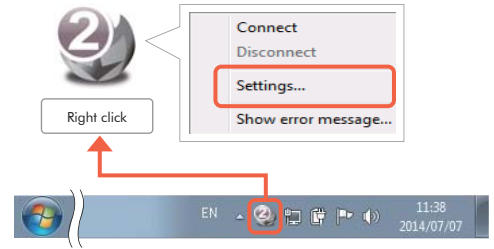
**Step 2** After the setup program starts, follow the instructions on the screen to proceed with setup.

**Step 3** From the Completing the MagicConnect2.0 (2) Setup Wizard dialogue box, click **Finish** and delete **mcclient20\_setup(2).exe**.

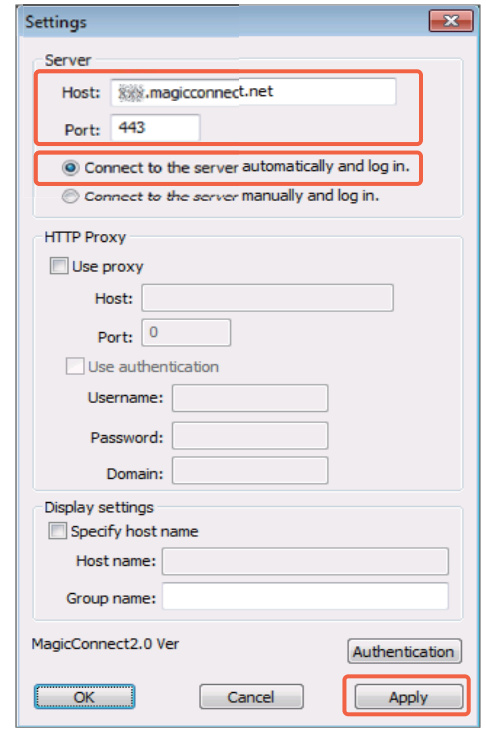


**4.** Initial setup and connection for the MagicConnect client(2) software

**Step 1** The following gray MagicConnect flame icon should be displayed in the Task Tray located at the bottom right of the Target PC's desktop screen. Right click the icon and select **Settings...** from the menu.



**Step 2** Enter the MagicConnect server information into the **Host** and **Port** boxes in the Server column of the Settings screen. Select **Connect to the server automatically and log in.** Click **Apply** to save the settings.



**Pointer**

**[For network environments that use a proxy to connect to the Internet]**  
 Check **Use proxy** and enter the information of the proxy server used for your network environment into the **Host** and **Port** boxes.

**[When using proxy server authentication]**  
 When completing the settings above, also check **Use authentication** and enter your proxy server authentication information.

HTTP Proxy

Use proxy

Host: proxy.hogehoge.com

Port: 3128

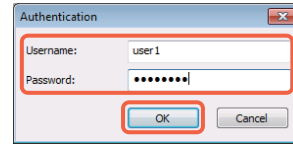
Use authentication

Username: proxy\_user

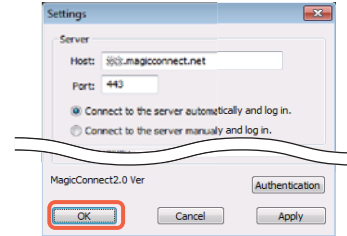
Password: ●●●●●●

Domain:

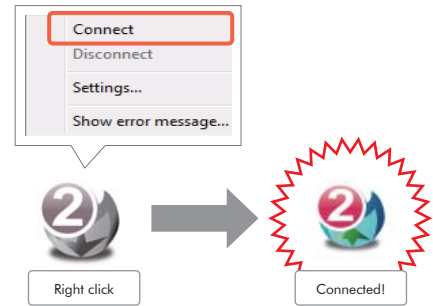
**Step 3** Click the **Authentication** button on the Settings screen.  
On the screen to the right, enter the MagicConnect account (username) and password, and click **OK**.



**Step 4** Click the **OK** button on the Settings screen.



**Step 5** Right click on the flame icon in the lower right corner of the Target PC. From the menu choose **Connect**. The icon will change from gray to blue and connections from outside the office will be enabled through MagicConnect.

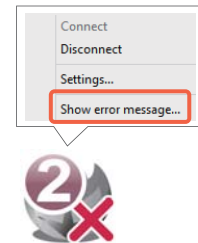


**Pointer**

[If a small x is shown on the flame icon]

Connection to the MagicConnect server has failed. Right click the icon and select **Show error message...** from the menu. Check the reference code and the reason for connection failure.

Please contact your Account Manager for more reference code explanations and helpful fixes.



**5. Setup for standby mode**

**Step 1** Place the Target PC in standby mode by switching the user, locking the screen, logging off, etc.

What follows is **setup/operation for the remote device.**

**For [iOS]** go to p.7

**For [Android]** go to p.11

# Remote device setup/operation [iOS]

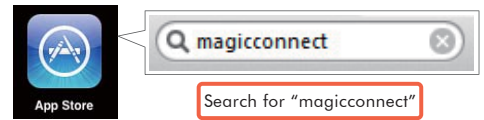
Commentary is based on the iOS 6.x operating system.

Please carry out these steps after setting up an Apple ID on your iPhone/iPad.

Setup Contents	
1. Installing MagicConnect viewer for iPhone/iPad	..... p.7
2. Initial setup and connection for MagicConnect viewer for iPhone/iPad	..... p.7
3. Remote device (iPhone/iPad) operation	..... p.10
4. Closing MagicConnect viewer for iPhone/iPad	..... p.10

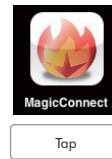
## 1. Installing MagicConnect viewer for iPhone/iPad

**Step 1** Install MagicConnect viewer from the **App Store** application.



## 2. Initial setup and connection for MagicConnect viewer for iPhone/iPad

**Step 1** Tap the installed app (shown to the right)



**Step 2** Tap **Server** and select the same server as the MagicConnect server information.



**Pointer**  
 [Specifying a server that is not in the list]  
 Tap **Add new server...** and enter the server address.

**Step 3** Enter the MagicConnect account (username) and password in the **Username** and **Password** boxes, and tap **Log in**.

**⚠ Caution**

The message to the right will appear the first time you log in. If you tap **OK**, the device-specific information given to your device when it was shipped (device certification information) will be registered on the server. After registration, login will not be allowed from other iPhones/iPads or Android devices, which prevents spoofing.

If you would like to change your remote device, ask your Account Manager to initialize your device certification information registered on the server.

**MagicConnect Alert**

To continue connection sequence, information on this device must be registered with the Server. After registration, connections from devices other than this one will not be possible.

No information violating user privacy is required.  
- Only basic device information required for restricting the connection device is collected.

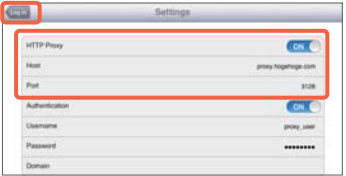
Cancel    OK



**💡 Pointer**

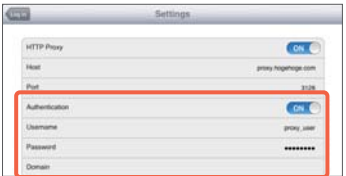
[For network environments that use a proxy to connect to the Internet]

- 1 Tap **Settings** in the upper right corner of the Log in screen.
- 2 Turn on **HTTP Proxy** and enter the information of the proxy server used for your network environment into the **Host** and **Port** boxes. Tap **Log in** in the upper left corner of the screen.

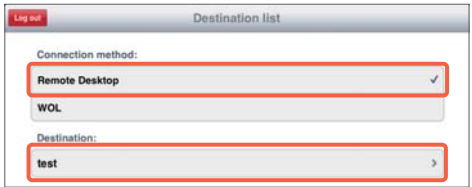


[When using proxy server authentication]

When completing 2 above, also turn on **Authentication** and enter the proxy server's authentication information.



**Step 4** On the Destination list screen, check that **Remote Desktop** is selected under **Connection method**. Under **Destination**, tap the Target PC to which you would like to connect.





**Step 5**

On the screen for entering your Windows log on information, enter the Target PC's Windows username and password, enter the domain if necessary, and tap **Display destination screen**. Only one username and domain name pair can be saved.

If you tap **Display destination screen** without entering the username, etc., enter them on the Windows screen shown to the right, and tap the right arrow.

**Step 6**

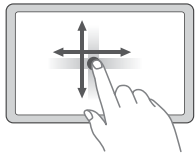
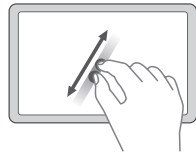
The Target PC's desktop screen and virtual mouse will be displayed and ready for use.







### 3. Remote device (iPhone/iPad) operation

Please refer to the following for how to use the Windows desktop screen.

#### General screen operations

Moving the screen	Shrinking/ enlarging the screen
	
Drag with 1 finger.	Pinch with 2 fingers.

#### Display of each function

Keyboard & menus	Virtual mouse
<b>Show</b> Tap the  button at the bottom of the screen	<b>Show</b> Bring up the menu and tap the  button.
<b>Hide</b> Tap the  button on the menu.	<b>Hide</b> Bring up the menu and tap the  button.

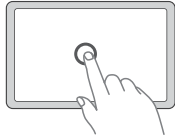
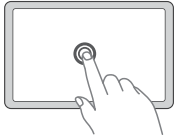
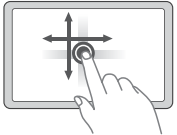
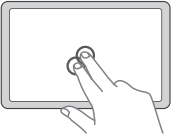
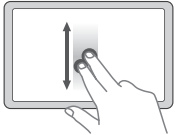
#### Mouse operation

Operate the virtual mouse that appears on the screen.

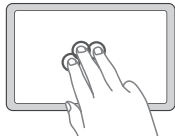
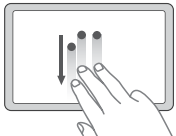


#### [Other useful operations]

It is possible to tap and scroll directly on the screen when using the virtual mouse.

Left click	Left double click	Drag left	Right click	Wheel
				
Tap with 1 finger.	Tap twice with 1 finger.	Tap twice with 1 finger and drag without lifting the finger.	Tap with 2 fingers. Or, long tap with 1 finger.	Scroll up and down with 2 fingers.



It is possible to show/hide the keyboard and menus with 3 fingers.

Menus	Keyboard
	
Tap with 3 fingers.	Swipe down with 3 fingers.

#### <Glossary>

Action	Movement
Drag	Drag across the screen with 1 finger
Pinch	With 2 fingers, pinch or move fingers apart
Tap	Lightly tap the screen with 1 finger
Scroll	Drag the screen upwards or downwards
Swipe	Drag the screen downwards

### 4. Closing MagicConnect viewer for iPhone/iPad

**Step 1** Tap the  button at the bottom of the screen, then tap the  button on the menu.

## Remote device setup/operation [Android]

Commentary is based on the Android 3.x operating system.

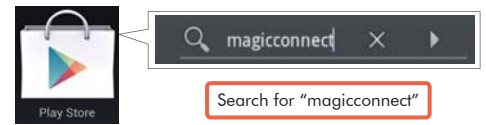
Please carry out these steps after setting up a Google account on your Android device.

### Setup Contents

<b>1.</b> Installing MagicConnect viewer for Android	..... p.11
<b>2.</b> Initial setup and connection for the MagicConnect viewer for Android	..... p.11
<b>3.</b> Remote device (Android device) operation	..... p.14
<b>4.</b> Closing MagicConnect viewer for Android	..... p.14

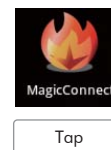
### 1. Installing MagicConnect viewer for Android

**Step 1** Install MagicConnect viewer from the **Play Store** application.



### 2. Initial setup and connection for the MagicConnect viewer for Android

**Step 1** Tap the installed app (shown to the right)



**Step 2** Tap **Server** and select the same server as the MagicConnect server information.



**Pointer**

[Specifying a server that is not in the list]

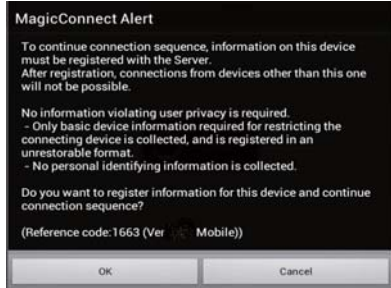
Tap **Add new server...** and enter the server address.

**Step 3** Enter the MagicConnect account (username) and password in the **Username** and **Password** boxes, and tap **Log in**.

**Caution**

The message to the right will appear the first time you log in. If you tap **OK**, the device-specific information given to your device when it was shipped (device certification information) will be registered on the server. After registration, login will not be allowed from other iPhones/iPads or Android devices, which prevents spoofing.

If you would like to change your remote device, ask your Account Manager to initialize your device certification information registered on the server.



**MagicConnect Alert**

To continue connection sequence, information on this device must be registered with the Server. After registration, connections from devices other than this one will not be possible.

No information violating user privacy is required.

- Only basic device information required for restricting the connecting device is collected, and is registered in an unrestoreable format.
- No personal identifying information is collected.

Do you want to register information for this device and continue connection sequence?

(Reference code: 1663 (Ver. Mobile))

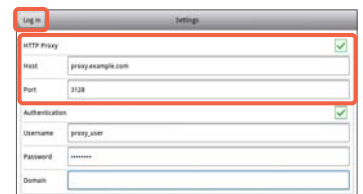
OK Cancel



**Pointer**

[For network environments that use a proxy to connect to the Internet]

- 1 Tap **Settings** in the upper right corner of the Log in screen.
- 2 Turn on **HTTP proxy** and enter the information of the proxy server used for your network environment into the **Host** and **Port** boxes.  
Tap **Log in** in the upper left corner of the screen.



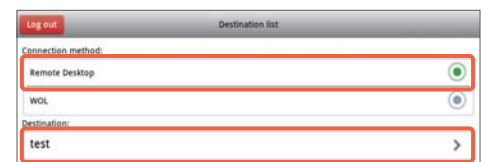
[When using proxy server authentication]

When completing 2 above, also turn on **Authentication** and enter the proxy server's authentication information.



**Step 4** On the Destination list screen, check that **Remote Desktop** is selected under **Connection method**.

Under **Destination**, tap the Target PC to which you would like to connect.



**Step 5**

On the screen for entering your Windows log on information, enter the Target PC's Windows username and password, enter the domain if necessary, and tap **Display destination screen**. Only one username and domain name can be saved.

If you tap **Display destination screen** without entering the username, etc., enter them on the Windows screen shown to the right, and tap the right arrow.

**Step 6**

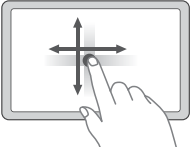
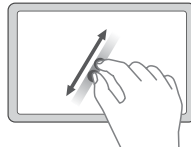
The Target PC's desktop screen and virtual mouse will be displayed and ready for use.





### 3. Remote device (Android device) operation

Please refer to the following for how to use the Windows desktop screen.

#### General screen operations

Moving the screen	Shrinking/ enlarging the screen
 <p>Drag with 1 finger.</p>	 <p>Pinch with 2 fingers.</p>

#### Display of each function

Menu	Keyboard	Virtual mouse
<p><b>Show / Hide</b></p> <p>Tap the Menu button on the Android device.</p>	<p><b>Show / Hide</b></p> <p>Tap Keyboard on the menu.</p>	<p><b>Show</b></p> <p>Bring up the menu and tap the  button.</p> <p><b>Hide</b></p> <p>Bring up the menu and tap the  button.</p>

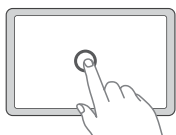
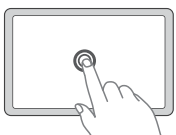
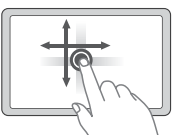
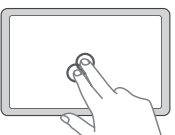
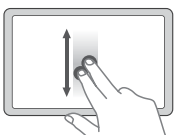
#### Mouse operation

Operate the virtual mouse that appears on the screen.

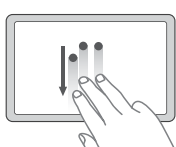


#### [Other useful operations]

It is possible to tap and scroll directly on the screen when using the virtual mouse.

Left click	Left double click	Drag left	Right click	Wheel
 <p>Tap with 1 finger.</p>	 <p>Tap twice with 1 finger.</p>	 <p>Tap twice with 1 finger and drag without lifting the finger.</p>	 <p>Tap with 2 fingers. Or, long tap with 1 finger.</p>	 <p>Scroll up and down with 2 fingers.</p>

It is possible to show/hide the keyboard with 3 fingers.

Keyboard
 <p>Swipe down with 3 fingers.</p>

#### <Glossary>

Action	Movement
Drag	Drag across the screen with 1 finger
Pinch	With 2 fingers, pinch or move fingers apart
Tap	Lightly tap the screen with 1 finger
Scroll	Drag the screen upwards or downwards
Swipe	Drag the screen downwards

### 4. Closing MagicConnect viewer for Android

**Step 1** Tap the Menu button, then tap the  button.