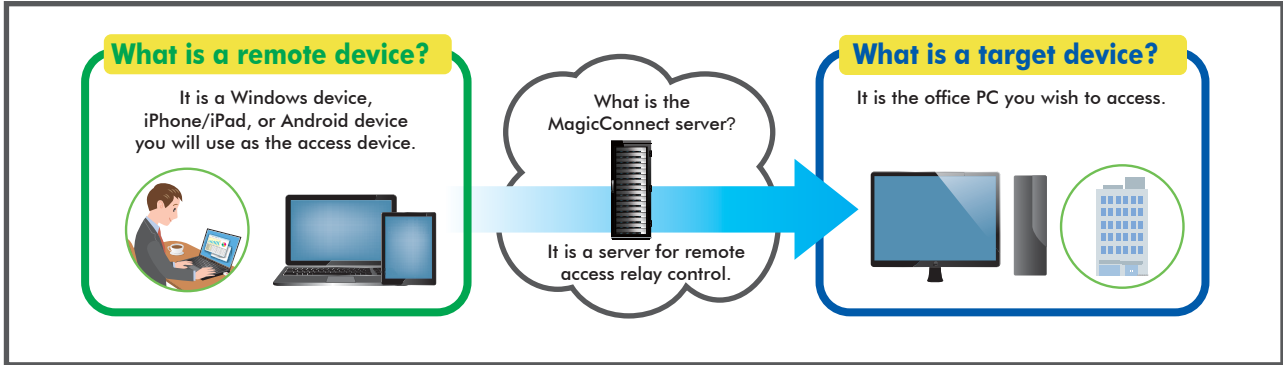






Getting Started

MagicConnect is a remote access service that allows you safe remote access to a target device from your remote device.



Steps for using MagicConnect

<h3>1 Items you need</h3> <p>Be sure that you have received the items listed to the right from your Account Manager.*</p> <p>*The person in your company in charge of managing MagicConnect accounts, USB keys, etc.</p>	Necessary items	Details
	Your MagicConnect account information	Includes three pieces of information: <input type="checkbox"/> Server information <input type="checkbox"/> Account (username) <input type="checkbox"/> Password
	The setup program (for your target device)	The following program: <input type="checkbox"/> mcclient20_setup.exe 
	The setup program (for your remote device)	The following program: <input type="checkbox"/> mcviewer20_setup_xdls_mc_assist.exe (For the XDL Plus edition: mcviewer20_setup_xdls_plus_mc_assist.exe) 
	User Administration Function Manual (For General Users)	Use this guide to change passwords, check connection histories, etc.
		
<h3>2 Target PC setup</h3>		p.2
		
<h3>3 Remote device setup/operation</h3>		<p>[Windows] p.7</p> <p>[iOS] p.12</p> <p>[Android] p.16</p>

Need help?

In the event that an error or similar trouble occurs during setup, please contact the Account Manager at your company.

Target PC setup

Commentary in this Quick Setup Manual is based on the Windows 7 Ultimate Edition operating system.

Setup procedures require administrator privileges.

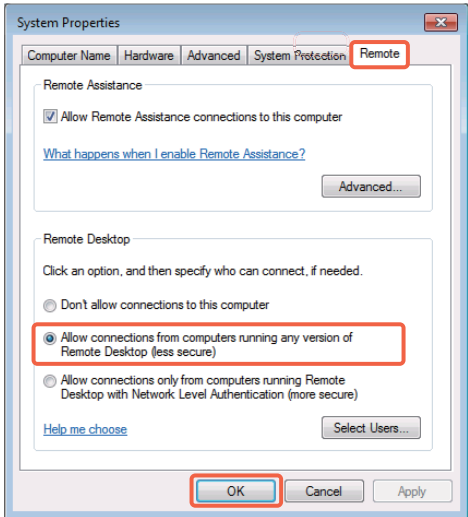
Setup Contents	
1. Enabling Remote Desktop connections p.2
2. Power options p.3
3. Installing the MagicConnect client software p.4
4. Initial setup and connection for the MagicConnect client software p.5
5. Setup for standby mode p.6

1. Enabling Remote Desktop connections

Step 1 Open System Properties from the **Start Menu**, go to **Control Panel, System and Security, System: Allow remote access.**

Step 2 Select the **Remote** tab, check **Allow connections from computers running any version of Remote Desktop**, and click **OK**.

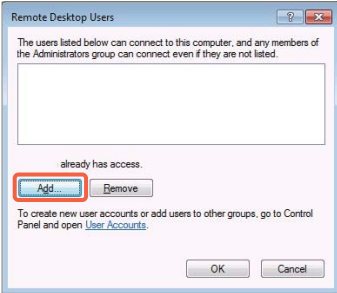
Caution Be sure to setup a Windows password for remote users that will log on to the Target PC.



Pointer

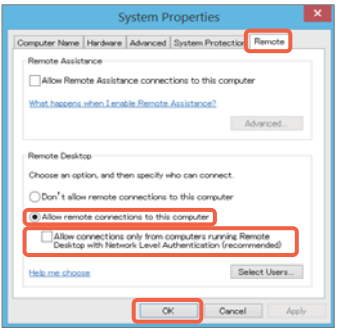
[For users without administrator privileges]

From the **Remote** tab, click the **Select Users** button to display the Remote Desktop Users screen (shown to the right). Click **Add** and register the remote user.



[For Windows 8/8.1]

- 1 Move the mouse to the lower left corner of the desktop and right click (if you are using touchscreen, press and hold). Select Control Panel from the menu that appears.
- 2 Open System Properties from **System and Security, System: Allow remote access.**
- 3 Check **Allow remote connections to this computer** from the **Remote** tab.
- 4 Uncheck **Allow connections only from computers running Remote Desktop with Network Level Authentication (recommended)**, and click **OK**.

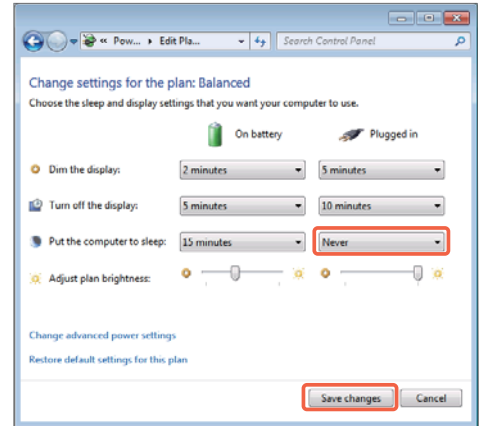


2. Power options

Step 1 From the **Start Menu**, go to **Control Panel, System and Security, Power Options**, and open **Change when the computer sleeps**.

Step 2 Select **Never** from the **Plugged in** column for **Put the computer to sleep**. Click **Save changes**. The Target PC must be a PC that is always connected to a power source.

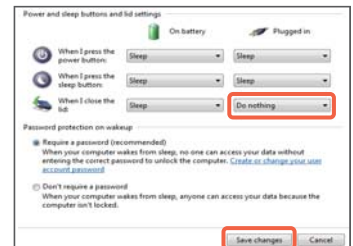
Caution When the Target PC is in sleep mode, users of MagicConnect will be unable to connect from outside the office.



Pointer

[When the Target PC is a laptop computer]

To keep the laptop from going to sleep when the cover is closed, complete the steps up to **Step 2** above, then select **Do nothing** from the **Plugged in** column for **When I close the lid**. Click **Save changes**.



3. Installing the MagicConnect client software

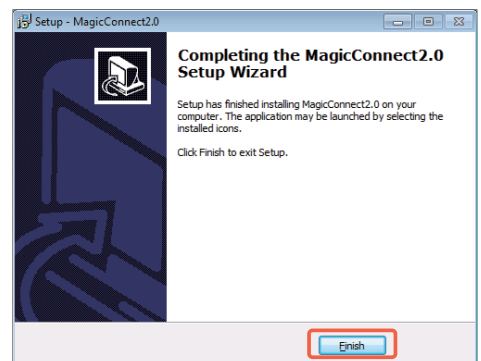
Step 1 Copy the setup program **mcclient20_setup.exe** (shown to the right) to the Target PC, then double click on it.



Double click

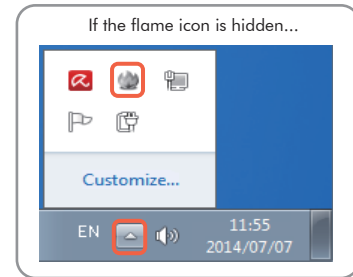
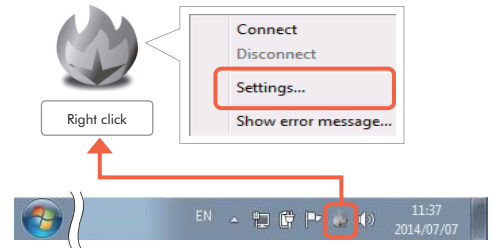
Step 2 After the setup program starts, follow the instructions on the screen to proceed with setup.

Step 3 From the Completing the MagicConnect2.0 Setup Wizard dialogue box, click **Finish** and delete **mcclient20_setup.exe**.

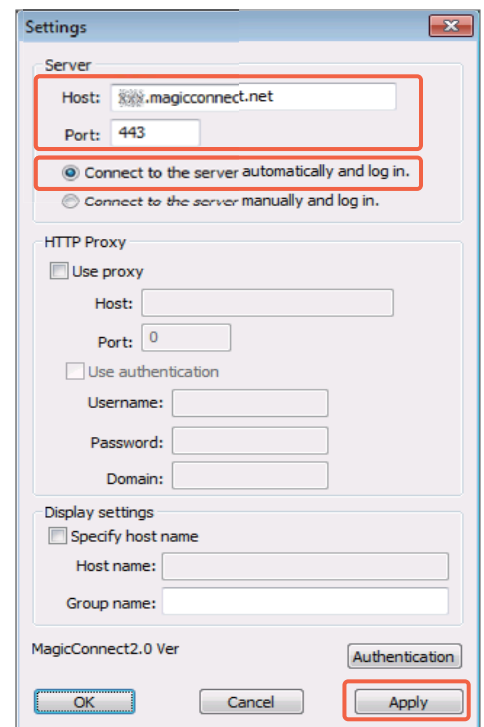


4. Initial setup and connection for the MagicConnect client software

Step 1 The following gray MagicConnect flame icon should be displayed in the Task Tray located at the bottom right of the Target PC's desktop screen. Right click the icon and select **Settings...** from the menu.



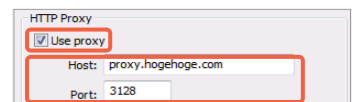
Step 2 Enter the MagicConnect server information into the **Host** and **Port** boxes in the Server column of the Settings screen. Select **Connect to the server automatically and log in.** Click **Apply** to save the settings.



Pointer

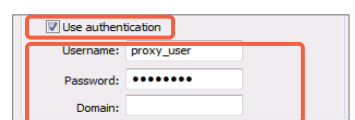
[For network environments that use a proxy to connect to the Internet]

Check **Use proxy** and enter the information of the proxy server used for your network environment into the **Host** and **Port** boxes.

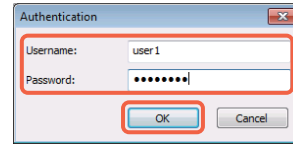


[When using proxy server authentication]

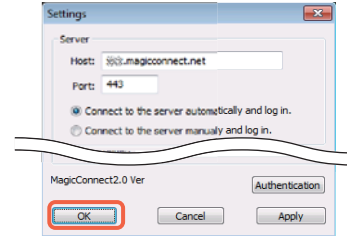
When completing the settings above, also check **Use authentication** and enter your proxy server authentication information.



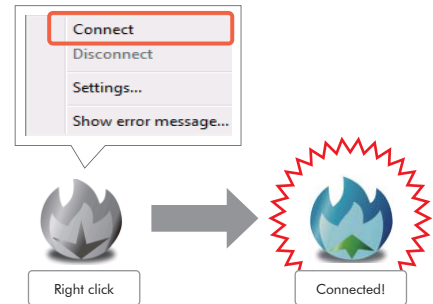
Step 3 Click the **Authentication** button on the Settings screen.
On the screen to the right, enter the MagicConnect account (username) and password, and click **OK**.



Step 4 Click the **OK** button on the Settings screen.



Step 5 Right click on the flame icon in the lower right corner of the Target PC. From the menu choose **Connect**. The icon will change from gray to blue and connections from outside the office will be enabled through MagicConnect.

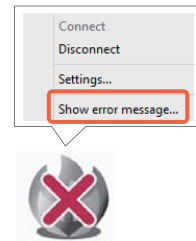


Pointer

[If a small x is shown on the flame icon]

Connection to the MagicConnect server has failed. Right click the icon and select **Show error message...** from the menu. Check the reference code and the reason for connection failure.

Please contact your Account Manager for more reference code explanations and helpful fixes.



5. Setup for standby mode

Step 1 Place the Target PC in standby mode by switching the user, locking the screen, logging off, etc.

What follows is **setup/operation for the remote device.**

For [Windows] go to p.7

For [iOS] go to p.12

For [Android] go to p.16

Remote device setup/operation [Windows]

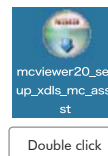
Commentary is based on the Windows 7 Ultimate Edition operating system.

Setup Contents

- 1. Installing the MagicConnect viewer software p.7
- 2. Launching MagicConnect viewer p.7
- 3. Initial setup and connection for the MagicConnect viewer p.8
- 4. Closing MagicConnect viewer p.9
- 5. Using the option tool p.10

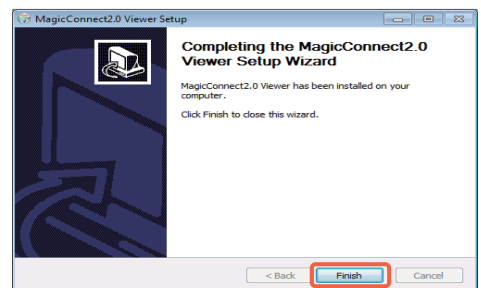
1. Installing the MagicConnect viewer software

Step 1 Copy the setup program **mcviewer20_setup_xdls_mc_assist.exe** (shown to the right), or **mcviewer20_setup_xdls_plus_mc_assist.exe**, to the remote device, then double click on it.



Step 2 After the setup program launches, follow the instructions on the screen to proceed with setup.

Step 3 From the Completing the MagicConnect2.0 Setup Wizard dialogue box, click **Finish** and delete **mcviewer20_setup_xdls_mc_assist.exe**, or **mcviewer20_setup_xdls_plus_mc_assist.exe**.



2. Launching MagicConnect viewer

Step 1 From the desktop, or from the **Start Menu, Programs**, click on the flame icon (shown to the right) and launch **MagicConnect2.0 Viewer**.*



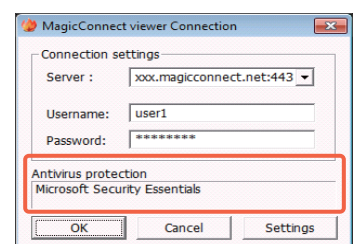
*For the XDL Plus edition, launch **MagicConnect2.0 Viewer Plus**.

Pointer

[Regarding quarantining]

The XDL Plus edition will display the MagicConnect viewer Connection window (shown to the right) only when the remote device's antivirus protection and quarantining is up to date and secure. (The name of the valid antivirus protection software will be shown on the screen.)

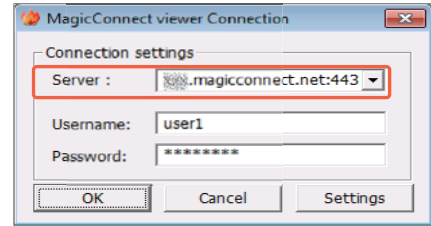
For antivirus and quarantining specifications, please ask your Account Manager.



3. Initial setup and connection for the MagicConnect viewer

Step 1 Enter the MagicConnect server information in the **Server** box.

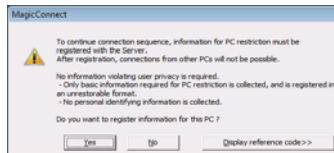
Caution Be sure to correctly enter the entire address, including **:443** at the end.



Step 2 Enter the MagicConnect account (username) and password in the **Username** and **Password** boxes, and click **OK**.

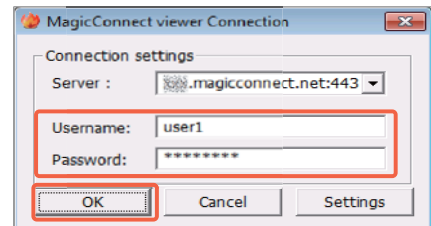
Caution

The message to the right will appear the first time you log in. If you click **Yes**, the device-specific information given to your device when it was shipped (terminal authentication information) will be registered on the server. After registration, login will only be allowed from the combined Windows user account and remote device recorded in these settings, which prevents spoofing.



If you would like to change your remote device, ask your Account Manager to initialize your device certification information registered on the server.

If you would like to install more than one MagicConnect viewer to the same remote device, log on with a different Windows user account and follow the steps from the beginning of p.7



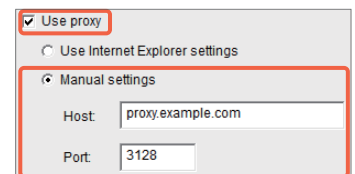
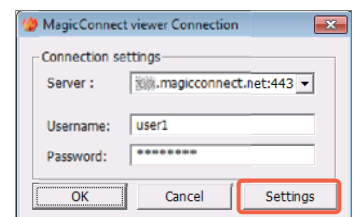
Pointer

[For network environments that use a proxy to connect to the Internet]

1 Depending on your network environment, an error may occur at **Step 2** if you do not complete your proxy settings manually. In this case, click **Settings** as shown on the screen to the right.

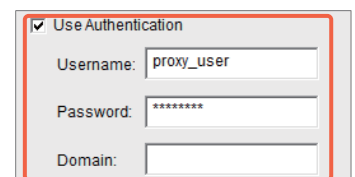
2 Check **Use proxy** and select **Manual settings**.

Enter the information of the proxy server used for your network environment into the **Host** and **Port** boxes, then click **OK** in the lower left.

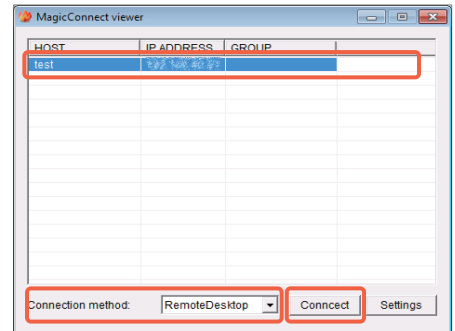


[When using proxy server authentication]

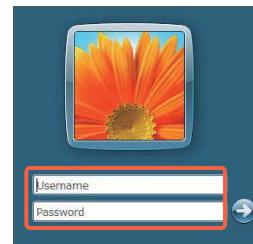
When completing 2 above, also check **Use Authentication** and enter the proxy server's authentication information.



- Step 3** Select the Target PC you would like to connect to from the **HOST** list (shown to the right). From the **Connection method** drop-down menu select **RemoteDesktop** and click **Connect**.



- Step 4** On the screen shown to the right, enter the Target PC's Windows username and password, and click the right arrow. The Target PC's desktop screen will be displayed and ready for use.

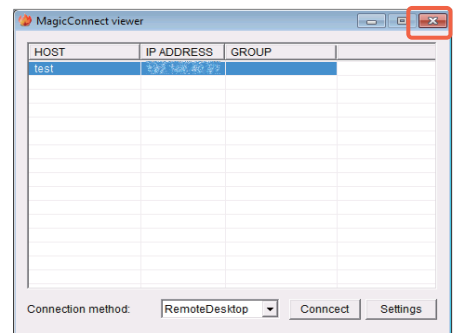


4. Closing MagicConnect viewer

- Step 1** Move your mouse cursor to the very top of the desktop screen and click the "x" on the trapezoidal menu bar.



- Step 2** Click the close mark "x" in the upper right of the MagicConnect viewer screen.



5. Using the option tool

◆ Using the automatic connection tool "MC Assist"

Using the automatic connection tool "MC Assist" to automatically execute the steps to show the logon screen of the Target PC.



Before carrying out these settings, make sure you confirm the following:

- (1) A password is setup for Windows users of your remote device.
- (2) You have followed the settings up to the previous page and logged onto the target PC from your remote device.

Step 1

Open **MC Assist Settings** from the **Start Menu, All Programs, MagicConnect2.0 Viewer**.



MC Assist Settings

Step 2

Enter the MagicConnect password in the **Password** box shown to the right.



Caution If the **Server** and **Username** boxes are empty, be sure to enter that information.

Connection settings

Server : xxx.magicconnect.net:443

Username : user1

Password :

Step 3

Uncheck **Disable automatic startup** on the screen shown to the right.

Check	After running MC Assist, the steps to show the logon screen of the Target PC will not be automatically executed. (MC Assist: off)
Uncheck	After running MC Assist, the steps to show the logon screen of the Target PC will be automatically executed. (MC Assist: on)

Use security check-enhanced MagicConnect viewer

Disable automatic startup



For the XDL Plus edition

Please specify the MagicConnect viewer for MC Assist to use.

Check	Launch mc_viewer_plus.exe . (antivirus protection and quarantining: on)
Uncheck	Launch mc_viewer.exe . (antivirus protection and quarantining: off) *Permission required from the Account Manager.

Use security check-enhanced MagicConnect viewer

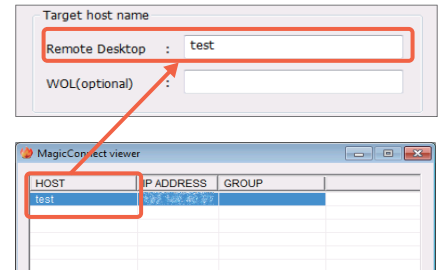
Disable automatic startup

- Step 4** Depending on your type of service (a or b below), set up the host name for the applicable Target PC.

(a) The Target PC will remain constantly connected to the MagicConnect server

- Step 1** Enter the Target PC's host name* in **Target host name, Remote Desktop**.

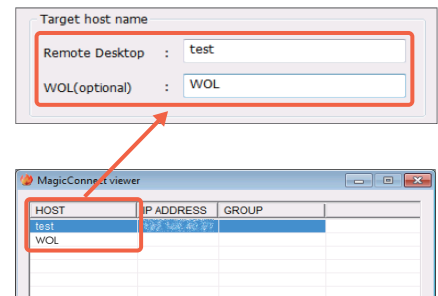
*The host name is the name displayed under **HOST** in the main window of MagicConnect viewer.



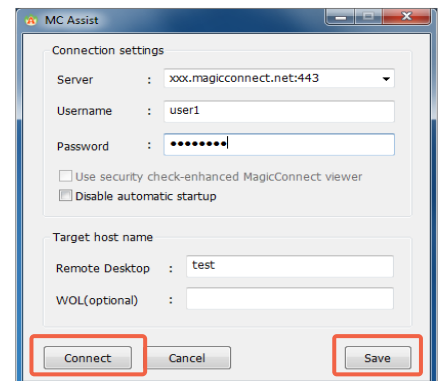
(b) The Target PC is turned off and will connect to the MagicConnect server after powering on with MC3000

- Step 1** Enter the Target PC's host name* in **Target host name, Remote Desktop**, and enter the MC3000 host name* in **WOL (optional)**.

*Each host name is the name displayed under **HOST** in the main window of MagicConnect viewer.



- Step 5** Click **Save**.
Click **Connect** to check whether you are able to connect.



- Step 6** To finish, follow the same steps as [4. Closing MagicConnect viewer](#) on p.9

MC Assist is now activated. Double click on the MC Assist desktop icon to launch the program and automatically execute the steps to show the logon screen of the Target PC.



MC Assist

Double click

Remote device setup/operation [iOS]

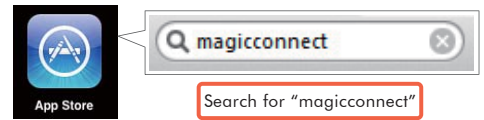
Commentary is based on the iOS 6.x operating system.

Please carry out these steps after setting up an Apple ID on your iPhone/iPad.

Setup Contents	
1. Installing MagicConnect viewer for iPhone/iPad p.12
2. Initial setup and connection for MagicConnect viewer for iPhone/iPad p.12
3. Remote device (iPhone/iPad) operation p.15
4. Closing MagicConnect viewer for iPhone/iPad p.15

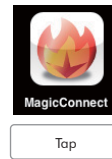
1. Installing MagicConnect viewer for iPhone/iPad

Step 1 Install MagicConnect viewer from the **App Store** application.

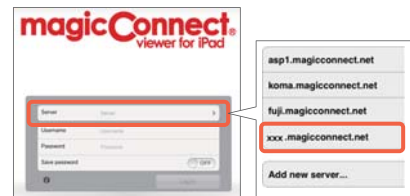


2. Initial setup and connection for MagicConnect viewer for iPhone/iPad

Step 1 Tap the installed app (shown to the right)



Step 2 Tap **Server** and select the same server as the MagicConnect server information.



Pointer
 [Specifying a server that is not in the list]
 Tap **Add new server...** and enter the server address.

Step 3 Enter the MagicConnect account (username) and password in the **Username** and **Password** boxes, and tap **Log in**.

⚠ Caution

The message to the right will appear the first time you log in. If you tap **OK**, the device-specific information given to your device when it was shipped (device certification information) will be registered on the server. After registration, login will not be allowed from other iPhones/iPads or Android devices, which prevents spoofing.

If you would like to change your remote device, ask your Account Manager to initialize your device certification information registered on the server.

MagicConnect Alert

To continue connection sequence, information on this device must be registered with the Server. After registration, connections from devices other than this one will not be possible.

No information violating user privacy is required.
- Only basic device information required for restricting the connection device is collected.

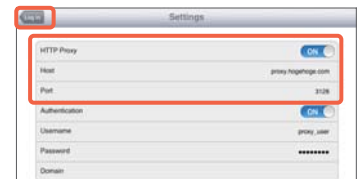
Cancel OK



💡 Pointer

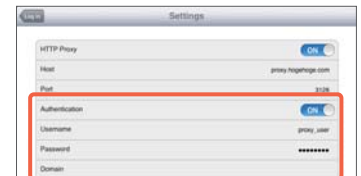
[For network environments that use a proxy to connect to the Internet]

- 1 Tap **Settings** in the upper right corner of the Log in screen.
- 2 Turn on **HTTP Proxy** and enter the information of the proxy server used for your network environment into the **Host** and **Port** boxes. Tap **Log in** in the upper left corner of the screen.

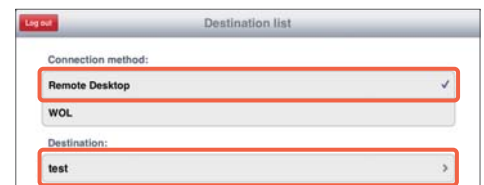


[When using proxy server authentication]

When completing 2 above, also turn on **Authentication** and enter the proxy server's authentication information.



Step 4 On the Destination list screen, check that **Remote Desktop** is selected under **Connection method**. Under **Destination**, tap the Target PC to which you would like to connect.



Step 5

On the screen for entering your Windows log on information, enter the Target PC's Windows username and password, enter the domain if necessary, and tap **Display destination screen**. Only one username and domain name pair can be saved.

If you tap **Display destination screen** without entering the username, etc., enter them on the Windows screen shown to the right, and tap the right arrow.

**Step 6**

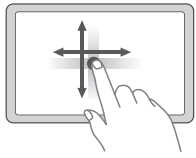
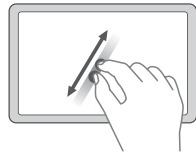
The Target PC's desktop screen and virtual mouse will be displayed and ready for use.







3. Remote device (iPhone/iPad) operation

Please refer to the following for how to use the Windows desktop screen.

General screen operations

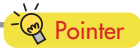
Moving the screen	Shrinking/enlarging the screen
 <p>Drag with 1 finger.</p>	 <p>Pinch with 2 fingers.</p>

Display of each function

Keyboard & menus	Virtual mouse
<p>Show</p> <p>Tap the  button at the bottom of the screen</p> <p>Hide</p> <p>Tap the  button on the menu.</p>	<p>Show</p> <p>Bring up the menu and tap the  button.</p> <p>Hide</p> <p>Bring up the menu and tap the  button.</p>

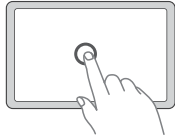
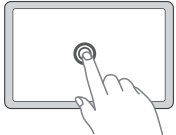
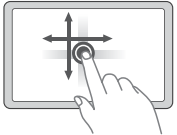
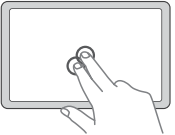
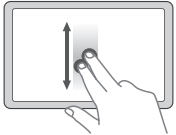
Mouse operation

Operate the virtual mouse that appears on the screen.

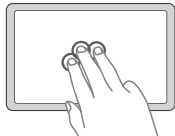
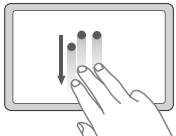


[Other useful operations]

It is possible to tap and scroll directly on the screen when using the virtual mouse.

Left click	Left double click	Drag left	Right click	Wheel
 <p>Tap with 1 finger.</p>	 <p>Tap twice with 1 finger.</p>	 <p>Tap twice with 1 finger and drag without lifting the finger.</p>	 <p>Tap with 2 fingers. Or, long tap with 1 finger.</p>	 <p>Scroll up and down with 2 fingers.</p>



It is possible to show/hide the keyboard and menus with 3 fingers.

Menus	Keyboard
 <p>Tap with 3 fingers.</p>	 <p>Swipe down with 3 fingers.</p>

<Glossary>

Action	Movement
Drag	Drag across the screen with 1 finger
Pinch	With 2 fingers, pinch or move fingers apart
Tap	Lightly tap the screen with 1 finger
Scroll	Drag the screen upwards or downwards
Swipe	Drag the screen downwards

4. Closing MagicConnect viewer for iPhone/iPad

Step 1 Tap the  button at the bottom of the screen, then tap the  button on the menu.

Remote device setup/operation [Android]

Commentary is based on the Android 3.x operating system.

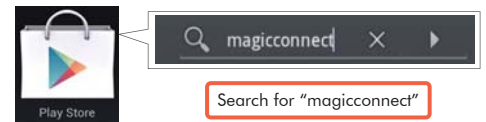
Please carry out these steps after setting up a Google account on your Android device.

Setup Contents

1. Installing MagicConnect viewer for Android p.16
2. Initial setup and connection for the MagicConnect viewer for Android p.16
3. Remote device (Android device) operation p.19
4. Closing MagicConnect viewer for Android p.19

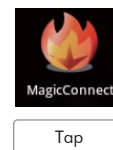
1. Installing MagicConnect viewer for Android

Step 1 Install MagicConnect viewer from the **Play Store** application.



2. Initial setup and connection for the MagicConnect viewer for Android

Step 1 Tap the installed app (shown to the right)



Step 2 Tap **Server** and select the same server as the MagicConnect server information.



Pointer

[Specifying a server that is not in the list]


Tap **Add new server...** and enter the server address.

Step 3 Enter the MagicConnect account (username) and password in the **Username** and **Password** boxes, and tap **Log in**.

Caution

The message to the right will appear the first time you log in. If you tap **OK**, the device-specific information given to your device when it was shipped (device certification information) will be registered on the server. After registration, login will not be allowed from other iPhones/iPads or Android devices, which prevents spoofing.

If you would like to change your remote device, ask your Account Manager to initialize your device certification information registered on the server.



MagicConnect Alert

To continue connection sequence, information on this device must be registered with the Server. After registration, connections from devices other than this one will not be possible.

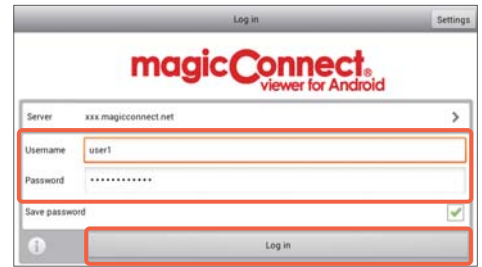
No information violating user privacy is required.

- Only basic device information required for restricting the connecting device is collected, and is registered in an unrestoreable format.
- No personal identifying information is collected.

Do you want to register information for this device and continue connection sequence?

(Reference code: 1663 (Ver. Mobile))

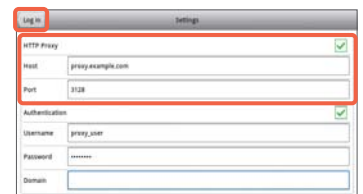
OK Cancel



Pointer

[For network environments that use a proxy to connect to the Internet]

- 1 Tap **Settings** in the upper right corner of the Log in screen.
- 2 Turn on **HTTP proxy** and enter the information of the proxy server used for your network environment into the **Host** and **Port** boxes. Tap **Log in** in the upper left corner of the screen.



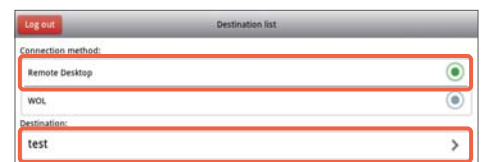
[When using proxy server authentication]

When completing 2 above, also turn on **Authentication** and enter the proxy server's authentication information.



Step 4 On the Destination list screen, check that **Remote Desktop** is selected under **Connection method**.

Under **Destination**, tap the Target PC to which you would like to connect.



Step 5

On the screen for entering your Windows log on information, enter the Target PC's Windows username and password, enter the domain if necessary, and tap **Display destination screen**. Only one username and domain name can be saved.

If you tap **Display destination screen** without entering the username, etc., enter them on the Windows screen shown to the right, and tap the right arrow.

**Step 6**

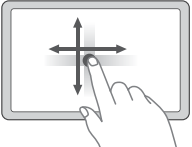
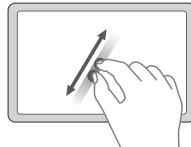
The Target PC's desktop screen and virtual mouse will be displayed and ready for use.





3. Remote device (Android device) operation

Please refer to the following for how to use the Windows desktop screen.

General screen operations

Moving the screen	Shrinking/ enlarging the screen
 <p>Drag with 1 finger.</p>	 <p>Pinch with 2 fingers.</p>

Display of each function

Menu	Keyboard	Virtual mouse
<p>Show / Hide</p> <p>Tap the Menu button on the Android device.</p>	<p>Show / Hide</p> <p>Tap Keyboard on the menu.</p>	<p>Show</p> <p>Bring up the menu and tap the  button.</p> <p>Hide</p> <p>Bring up the menu and tap the  button.</p>

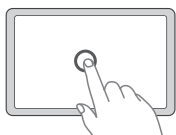
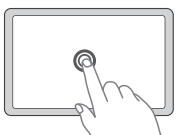
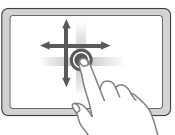
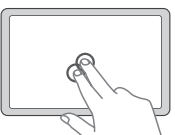
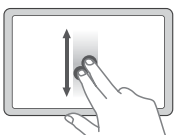
Mouse operation

Operate the virtual mouse that appears on the screen.

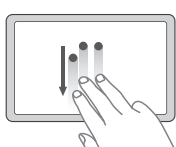


[Other useful operations]

It is possible to tap and scroll directly on the screen when using the virtual mouse.

Left click	Left double click	Drag left	Right click	Wheel
 <p>Tap with 1 finger.</p>	 <p>Tap twice with 1 finger.</p>	 <p>Tap twice with 1 finger and drag without lifting the finger.</p>	 <p>Tap with 2 fingers. Or, long tap with 1 finger.</p>	 <p>Scroll up and down with 2 fingers.</p>

It is possible to show/hide the keyboard with 3 fingers.

Keyboard
 <p>Swipe down with 3 fingers.</p>

<Glossary>

Action	Movement
Drag	Drag across the screen with 1 finger
Pinch	With 2 fingers, pinch or move fingers apart
Tap	Lightly tap the screen with 1 finger
Scroll	Drag the screen upwards or downwards
Swipe	Drag the screen downwards

4. Closing MagicConnect viewer for Android

Step 1 Tap the Menu button, then tap the  button.